

Micro Switch

V Series



Part Number Description

V 1 15F - 2 C

① Description	No mark : Standard	V : Special (Only 01)		
② Head Type	01 : Push Plunger	06 : Lever	070 : Round Lever	060 : Long Lever
	07 : Roller Long Lever	08 : Short Lever	09 : Roller Short Lever	

VAP - 1 2

① Button Size	10 : Ø10	13 : Ø13	18 : Ø18	
② Button Color	R : Red	G : Green	Y : Yellow	K : Black

General Specification

Contact Form		1C				
Contact Material		Ag alloy				
Contact & Contact Distance		0.5mm				
Insulation Resistance		100MΩ 500VDC				
Contact Resistance		50mΩ				
Contact Ratings	Non-Inductive	Resistive Load	Normal Open		Normal Close	
			15A 125VAC 10A 250VAC	10A 8VDC 5A 14VDC 2A 30VDC 0.5A 125VDC 0.25A 250VDC	15A 125VAC 15A 250VAC	15A 8VDC 15A 14VDC 10A 30VDC 0.6A 125VDC 0.3A 250VDC
		Lamp Load	1.5A 125VAC 1.0A 250VAC	1.5A 8VDC 1.5A 14VDC 1.0A 30VDC 0.1A 125VDC 0.05A 250VDC	3A 125VAC 2A 250VAC	4A 8VDC 4A 14VDC 4A 30VDC 0.1A 125VDC 0.05A 250VDC
			Inductive Load	10A 125VAC 6A 250VAC	8A 8VDC 4A 14VDC 1.5A 30VDC 0.05A 125VDC 0.03A 250VDC	10A 125VAC 10A 250VAC
	Motor Load	2A 125VAC 1A 250VAC		2.5A 8VDC 2.5A 14VDC 1.5A 30VDC 0.05A 125VDC 0.04A 250VDC	4A 125VAC 3A 250VAC	6A 8VDC 6A 14VDC 4A 30VDC 0.1A 125VDC 0.05A 250VDC
		Minimum Inrush Current		Normal Open 15A		Normal Close 30A

- The aforementioned values are steady-state current values.
- The inductive load has a power factor of 0.4 or more (AC), and a time constant of 7 m/s or less (DC).
- The inrush current is ten times larger than steady-state current in the lamp load, and six times, in the motor load.

Operating Speed		0.1mm/sec - 0.5m/sec
Dielectric Strength		1,500VAC 1 Minute
Life Cycle	Electrical	Min. 100,000
	Mechanical	Min. 1,000,000
Vibration Resistance		10 - 55Hz(durable amplitude 1.5mm)
Shock Resistance		30G
Ambient Temperature		-25°C - +80°C (with no icing)Z
Ambient Humidity		35% - 80% RH

☞ The material and the specification of the product can be changed without notice for better quality.




Micro Switch

V Series

Product Selection

	Color	Part Number	Contact Form	Contact & Contact Distance	PT	MD	OT	OP
	Black	V15F - 01C	1C	0.5 mm	17mm	0.4mm	0.8mm	14.7 ± 0.6 mm
	Black	V15F - 06C	1C	0.5 mm	32mm	12mm	12mm	15.3 ± 1.2 mm
	Black	V15F - 070C	1C	0.5 mm	32mm	12mm	12mm	15.5 ± 1.2 mm
	Black	V15F - 060C	1C	0.5 mm	75mm	22mm	22mm	15.3 ± 2.6 mm
	Black	V15F - 07C	1C	0.5 mm	32mm	12mm	12mm	20.7 ± 1.2 mm
	Black	V15F - 08C	1C	0.5 mm	16mm	0.5mm	0.8mm	15.3 ± 0.8 mm
	Black	V15F - 09C	1C	0.5 mm	16mm	0.5mm	0.8mm	20.7 ± 0.8 mm
	Black	VV15F - 01C	1C	0.5 mm	16mm	0.4mm	0.8mm	14.7 ± 0.6 mm

Product Selection

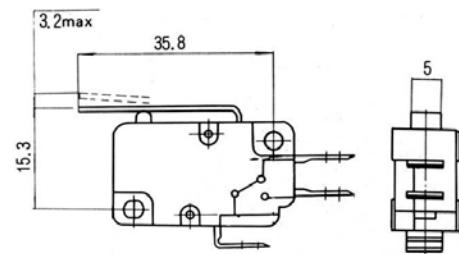
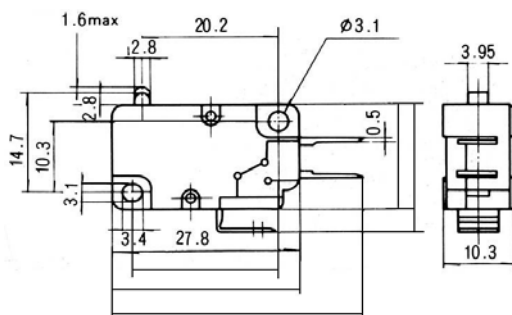
	Button Color	Part Number	Contact Form	Contact & Contact Distance	PT	MD	OT	OP
	Red	VAP - 10R	1C	0.5 mm	16 mm	0.4 mm	0.8 mm	14.7 ± 0.6 mm
	Green	VAP - 10G						
	Red	VAP - 13R	1C	0.5 mm	16 mm	0.4 mm	0.8 mm	14.7 ± 0.6 mm
	Green	VAP - 13G						
	Yellow	VAP - 13Y						
	Blue	VAP - 13B						
	Black	VAP - 13K						
	Red	VAP - 18R	1C	0.5 mm	16 mm	0.4 mm	0.8 mm	14.7 ± 0.6 mm
	Green	VAP - 18G						
	Yellow	VAP - 18Y						
	Blue	VAP - 18B						
	Black	VAP - 18K						

Dimension

unit : mm

V15F - 01C

V15F - 06C



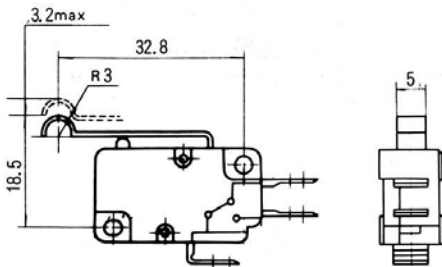
Micro Switch

V Series

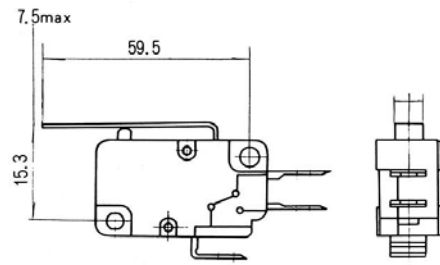
Dimension

unit : mm

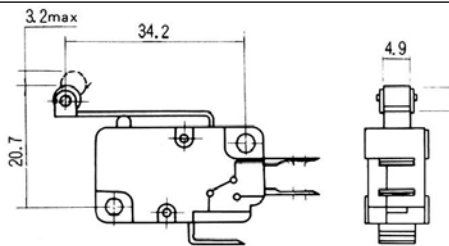
V15F-070C



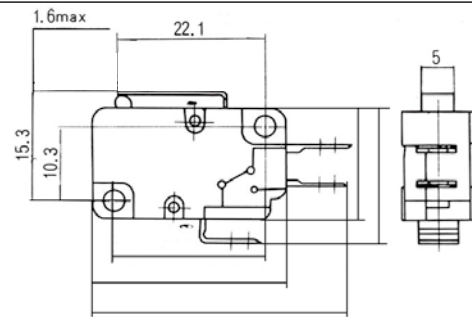
V15F-060C



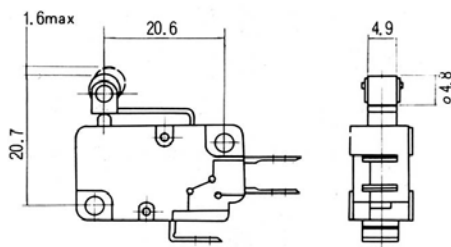
V15F-07C



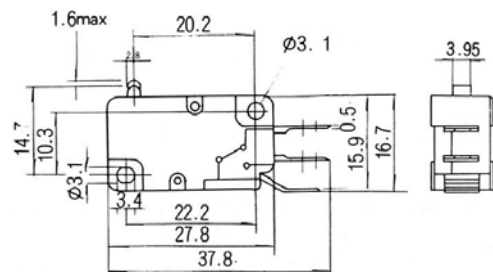
V15F-08C



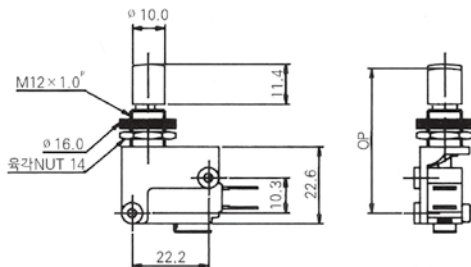
V15F-09C



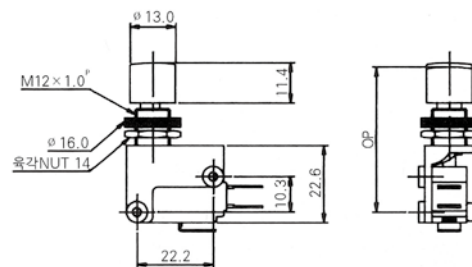
VV15F-01C



VAP-10



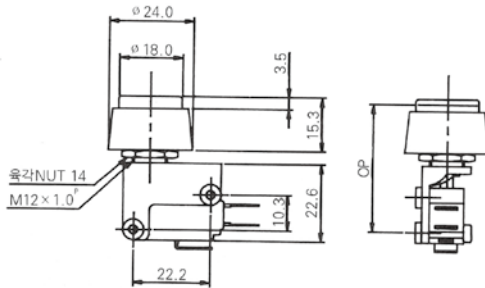
VAP-13



Dimension

unit : mm

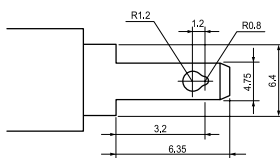
VAP-18



Glossary

Operating characteristics	Category	Abbr.	Term	Unit	Definition
	Force	Force required for operation	OF	g, kg g-mm	Force on the actuator required for the motion from the free position to the operating position
		Restoring force	RF	g, kg g-mm	Force on the actuator required for the motion from the operating limit position to the restoring position
		Force required for entire motion	TF	g, kg g-mm	Force on the actuator required for the motion from the operating position to the operating limit position
	Motion	Motion to the operating position	PT	mm, deg	Distance or angle from the free position of the actuator to the operating position
		Motion after operation	OT	mm, deg	Distance or angle from the operating position of the actuator to the operating limit position
		Hysteresis distance	MD	mm, deg	Distance or angle from the operating position of the actuator to the restoring position
		Total motion	TT	mm, deg	Distance or angle from the free position of the actuator to the operating limit position
<p>Center of the switch mounting hole</p>	Position	Free position	FP	mm, deg	The position of the operating part when no force is applied from outside
		Operating position	OP	mm, deg	The position of the actuator when the external force is applied to the actuator and the moving contact reverses from the free position
		Restoring position	RP	mm, deg	The position of the actuator when the external force to the actuator is reduced and the moving contact reverses from the operating position to the free position
		Operating limit position	TTP	mm, deg	The position of the actuator when the actuator reaches the actuator stop position

Terminal



※ Quick Connect Tab #187 / Soldering t=0.5